

*

3251

BOARD DIPLOMA EXAMINATION, (C-09)

MARCH/APRIL-2019

DME – THIRD SEMESTER EXAMINATION

MACHINE DRAWING

Time: 3Hours]

[Max.Marks: 60

PART-A

4x5=20M

Instructions: 1) Answer **all** the questions and each question carries **five** marks.

2) All dimensions are in mm.

- 1) Draw a hexagonal headed fully threaded bolt of length L and diameter D.
 - 2) Draw the rivet heads for rivets of diameter 20 mm indicating the standard proportions a) Pan head b) Snap head.
 - 3) Draw the single line symbols for the following pipe fittings.
a) Globe Valve b) Coupling
c) Tee d) 90° Elbow
 - 4) Draw weld symbols for the following types of welds.
a) Square butt joint
b) spot weld
c) convex double V-butt weld
d) Fillet weld
- *

WWW.MANARESULTS.CO.IN

PART-B

1x40=40M

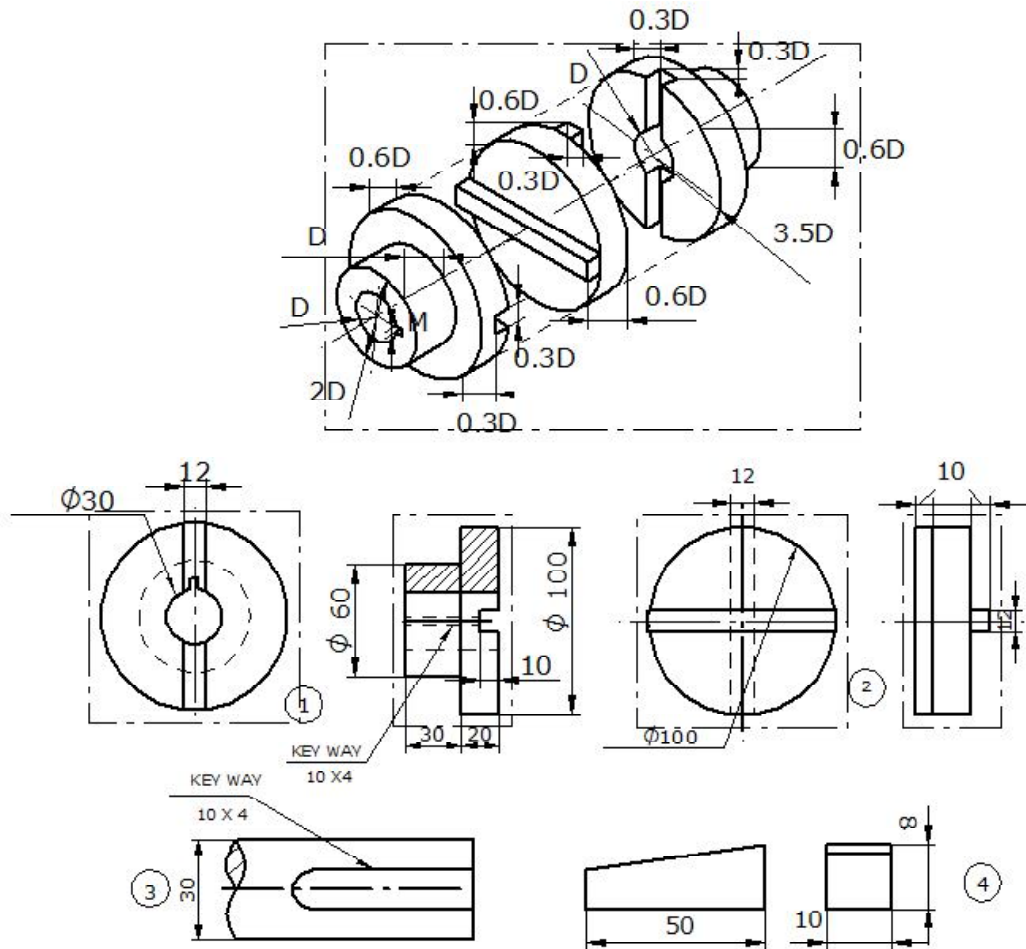
Instructions: 1) Answer any **one** question.

2) Each question carries **forty** marks.

3) All dimensions are in mm and choose suitable scale.

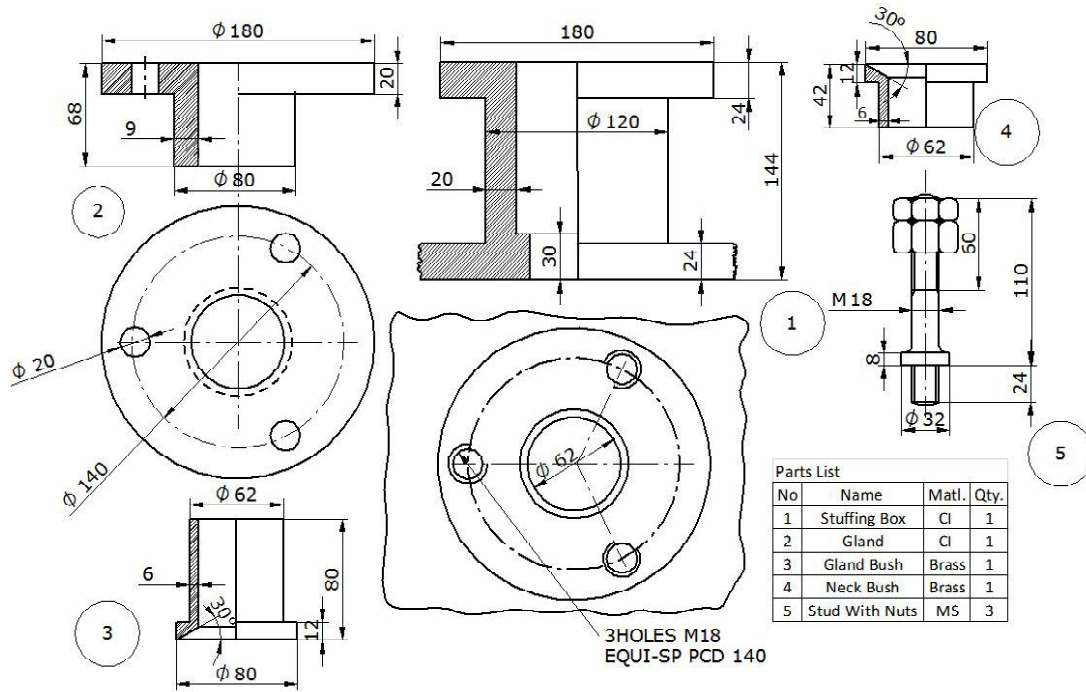
5) Assemble the parts of Oldham coupling shown in Fig 1 (page 3) and draw the following views

a) half sectional front view, and b) left side view. 25+10+5



Parts List			
No.	Name	Matl.	Qty.
1	Flange	M.S	2
2	Disc	M.S	1
3	Shaft	M.S	2
4	Key	M.S	2

- 6) Assemble the parts of the stuffing box for a vertical steam engine as shown in Fig 2 (page 4) and draw
- a) half sectional front view, b) top view. 25+10+5



* * *