



C09-M-307/C09-MET-307

**3251**

**BOARD DIPLOMA EXAMINATION, (C-09)**

**OCT/NOV—2017**

**DME—THIRD SEMESTER EXAMINATION**

**MACHINE DRAWING**

*Time* : 3 hours ]

[ *Total Marks* : 60

**PART—A**

5×4=20

**Instructions** : (1) Answer **all** questions.

(2) Each question carries **five** marks.

(3) Answers should be neat and clear with all the necessary dimensions.

(4) All dimensions are in mm.

**1.** Draw the front view and right-side view of hexagonal headed bolt with proportionate dimensions. Assume diameter of bolt as 30 mm and length as 100 mm. 3+2

**2.** Draw the following with standard proportions : 2½×2=5

(a) Capstan nut

(b) Wing nut

**3.** Draw the symbols for the following pipe fittings : 1×5=5

(a) Globe valve

(b) Check valve

(c) Reducer

(d) Union joint

(e) Gate valve

/3251

1

[ *Contd...*

[www.ManaResults.co.in](http://www.ManaResults.co.in)

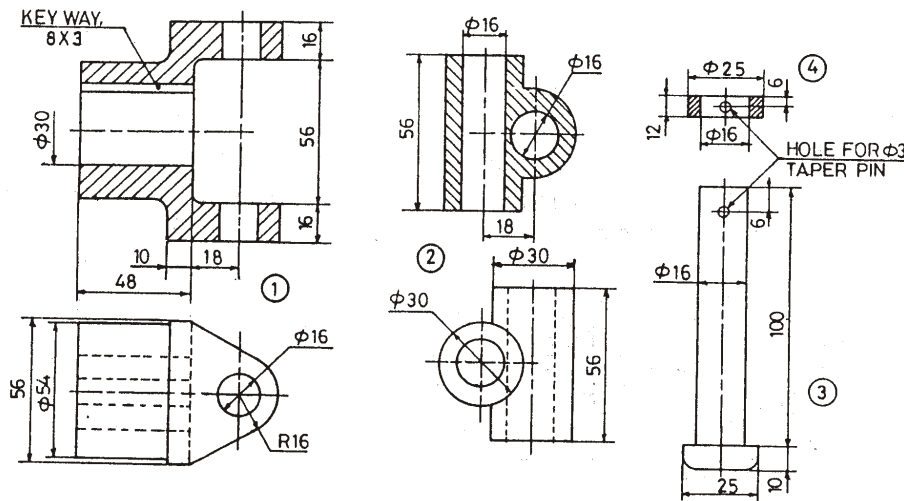
4. Draw the symbols for the following types of weld : 1×5=5
- (a) Spot weld
  - (b) Steam weld
  - (c) Single V-butt weld
  - (d) Fillet weld
  - (e) Plug weld

**PART—B**

40

- Instructions :** (1) Answer *any one* question.  
 (2) All dimensions are in mm.  
 (3) Assume missing data suitably.

5. Assemble the parts of the universal coupling as shown in Fig. 1.
- (a) Full-sectional front view 20+3 marks for dimensioning
  - (b) Left-side view 15+2 marks for dimensioning



Parts list

No.	Name	Matl	Qty
1	Fork	MS	2
2	Centre block	MS	1
3	Pin	MS	2
4	Collar	MS	2

Fig. 1

6. Assemble the parts of the screw jack as shown in Fig. 2.

(a) Half-sectional front view with right half in section

23+3 marks for dimensioning

(b) Top view

12+2 marks for dimensioning

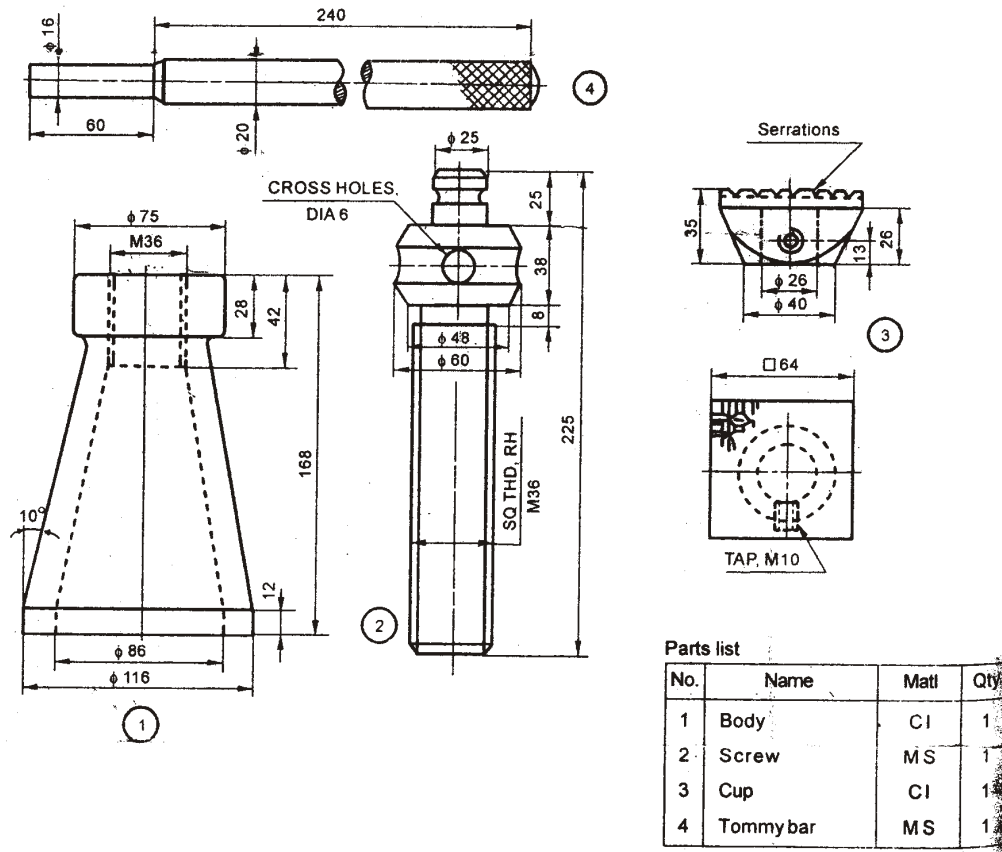


Fig. 2

\*\*\*