



C09-M/MET-307

**3251**

**BOARD DIPLOMA EXAMINATION, (C-09)**

**OCT/NOV—2018**

**DME—THIRD SEMESTER EXAMINATION**

**MACHINE DRAWING**

*Time : 3 hours ]*

*[ Total Marks : 60*

**PART—A**

5×4=20

**Instructions :** (1) Answer **all** questions.

(2) Each question carries **five** marks.

(3) All dimensions are in mm.

(4) Choose suitable scale.

**1.** Draw a double riveted zig-zag lap joint connecting two plates of 6 mm thick.

**2.** Draw the following forms of key :

2½×2=5

(a) Flat saddle key

(b) Woodruff key

**3.** Draw the single line symbols for the following pipe fittings :

1×5=5

(a) Check valve

(b) Lateral

(c) 90° elbow

(d) Tee

(e) Union

**/3251**

1

*[ Contd...*

[WWW.MANARESULTS.CO.IN](http://WWW.MANARESULTS.CO.IN)

4. Draw weld symbols for the following :

1×5=5

- (a) Plug weld
- (b) Flat single V-butt weld
- (c) Concave fillet weld
- (d) Seam weld
- (e) Fillet weld

**PART—B**

40

**Instructions :** (1) Answer *any one* question and it carries **forty** marks.  
 (2) All dimensions are in mm.  
 (3) Choose suitable scale.

5. Assemble the parts of steam engine cross head shown in Fig. 1 and draw the following views : 25+15

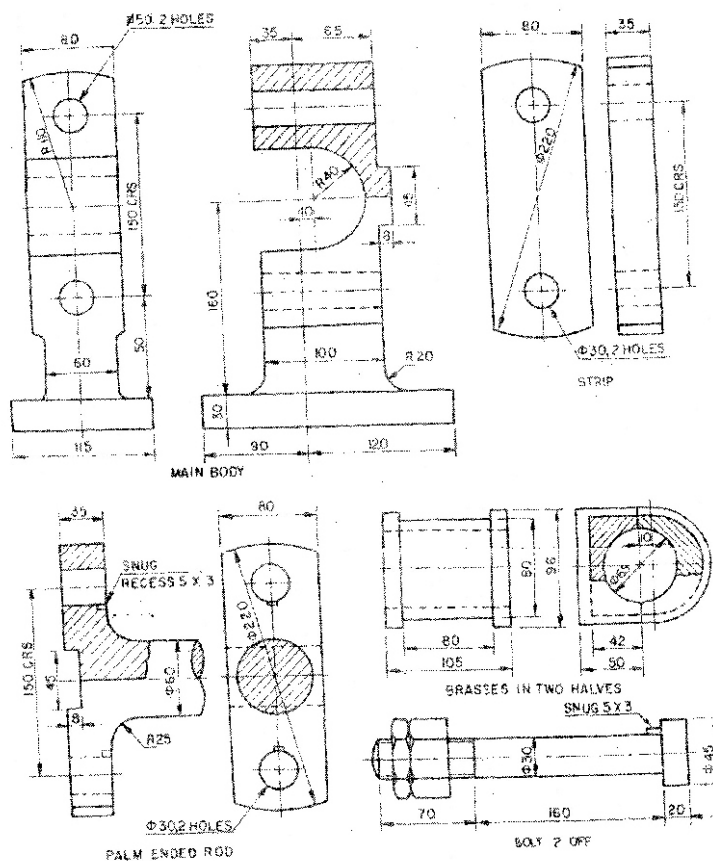


Fig. 1

- (a) Half sectional front view with top half in section
- (b) Side view

6. Assemble the parts of flanged coupling shown in Fig. 2 and draw the following views : 25+15

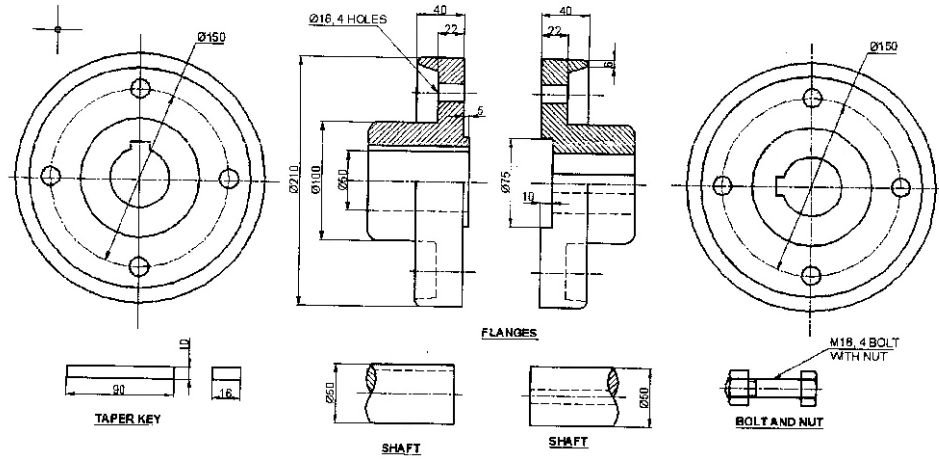


Fig. 2 : Flange coupling parts

- (a) Half sectional front view  
(b) Right side view

\*\*\*