

\*

**4255**  
**BOARD DIPLOMA EXAMINATION, (C-14)**  
**JUNE-2019**  
**DME -THIRD SEMESTER EXAMINATION**  
**MACHINE DRAWING PRACTICE**

Time: 3Hrs

Max.Marks: 60

**PART - A**

**4x5=20M**

**Instructions:**

- 1) Answer **all** the questions.
- 2) Each question carries **five** marks
- 3) All dimensions are to be in given in mm.

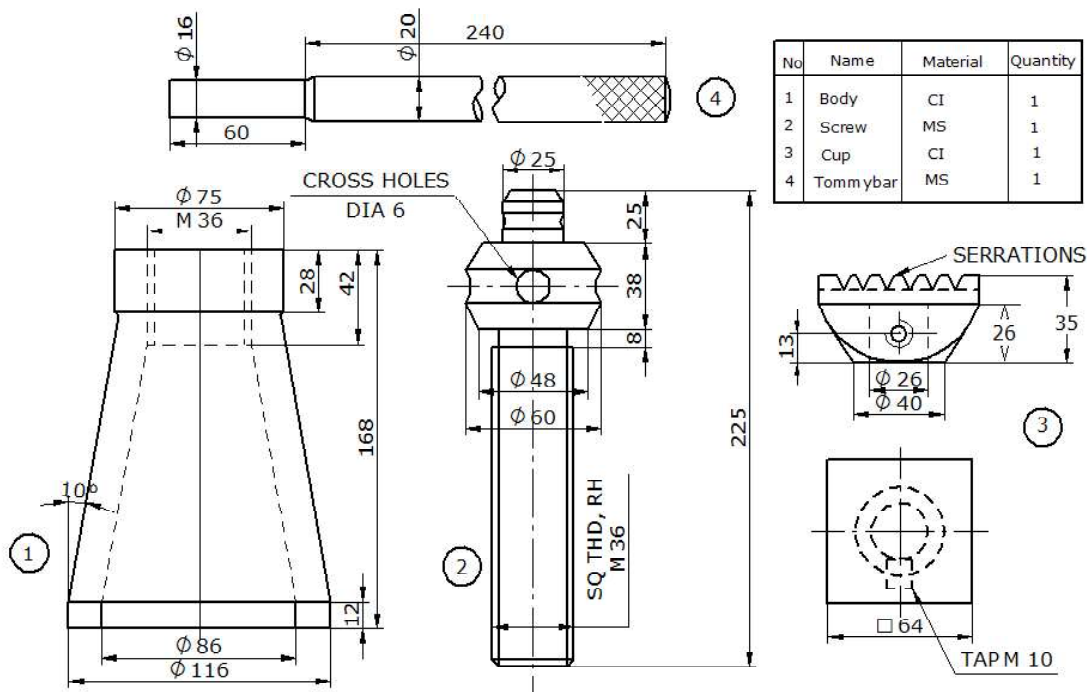
- 1) Draw the front view of an Eye bolt with 20mm diameter.
- 2) Draw the front and top view of a double riveted zig-zig lap joint. The thickness of plates to be joined is 9mm.
- 3) Draw the following Weld symbols.
  - a) Convex double-V butt weld.
  - b) Single bevel butt weld
  - c) Flat weld
  - b) Single U butt weld
  - e) Single V butt weld
- 4) Draw the following pipe fitting symbols (single line)
  - a) Coupling
  - b) Check valve
  - c) Cap

\*

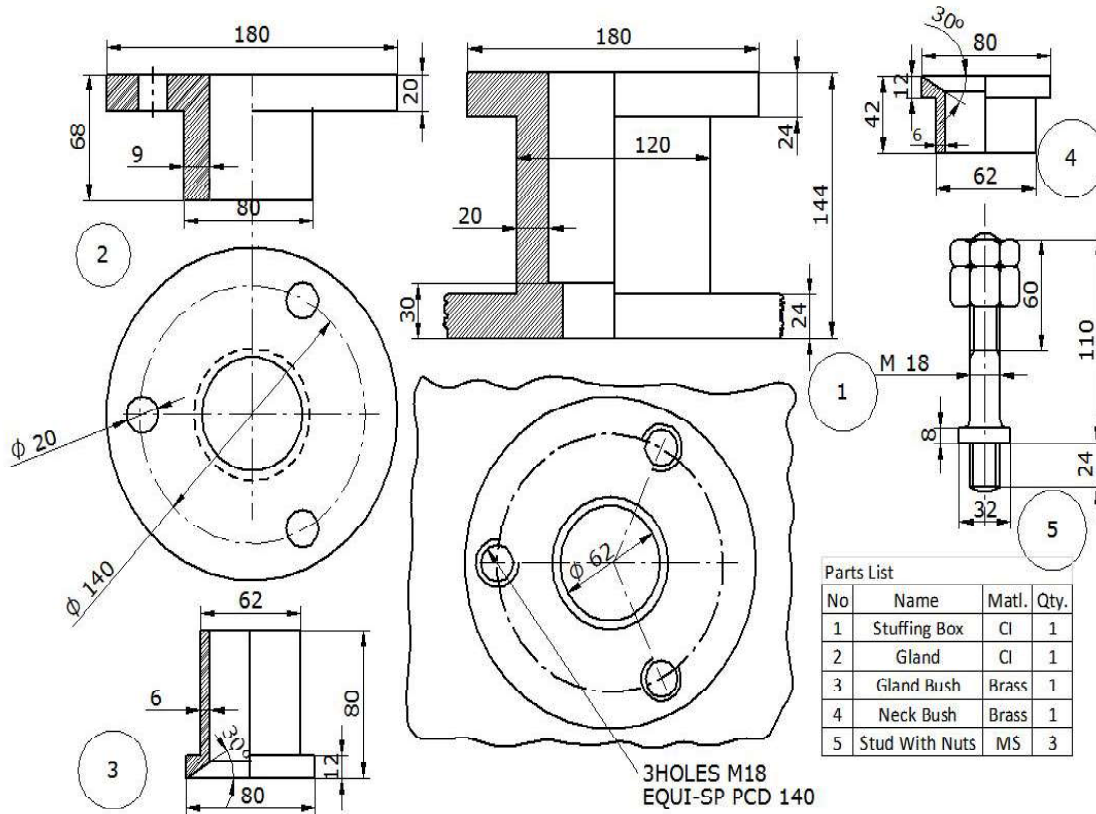
**PART - B**

**1x40=40**

- Instructions:** 1) Answer any **one** question and each question carries forty marks.  
 2) All dimensions are given in mm and choose suitable scale.  
 3) Assume missing dimensions suitably.
- 5) Draw the front and top view of Screw jack in assembly, the details of which are given below.



6) Draw the front and top view of Stuffing box in assembly, the details which are given below.



Parts List

No	Name	Matl.	Qty.
1	Stuffing Box	CI	1
2	Gland	CI	1
3	Gland Bush	Brass	1
4	Neck Bush	Brass	1
5	Stud With Nuts	MS	3