



C14-M-307

4255

**BOARD DIPLOMA EXAMINATION, (C-14)
OCT/NOV—2018
DME—THIRD SEMESTER EXAMINATION**

MACHINE DRAWING PRACTICE

Time : 3 hours]

[Total Marks : 60

PART—A

5×4=20

- Instructions :** (1) Answer **all** questions.
(2) Each question carries **five** marks.
(3) Answers should be neat and clear with all necessary dimensions.
(4) All dimensions are in mm.

1. Draw the following thread profiles with proportions : $2\frac{1}{2} \times 2\frac{1}{2} = 5$

- (a) Worm thread
(b) Sellers' thread

2. Draw the following pipe fitting symbols :

1×5=5

- (a) Union
(b) Tee
(c) 90° Elbow
(d) Plug
(e) Cap

/4255

1

[Contd...

WWW.MANARESULTS.CO.IN

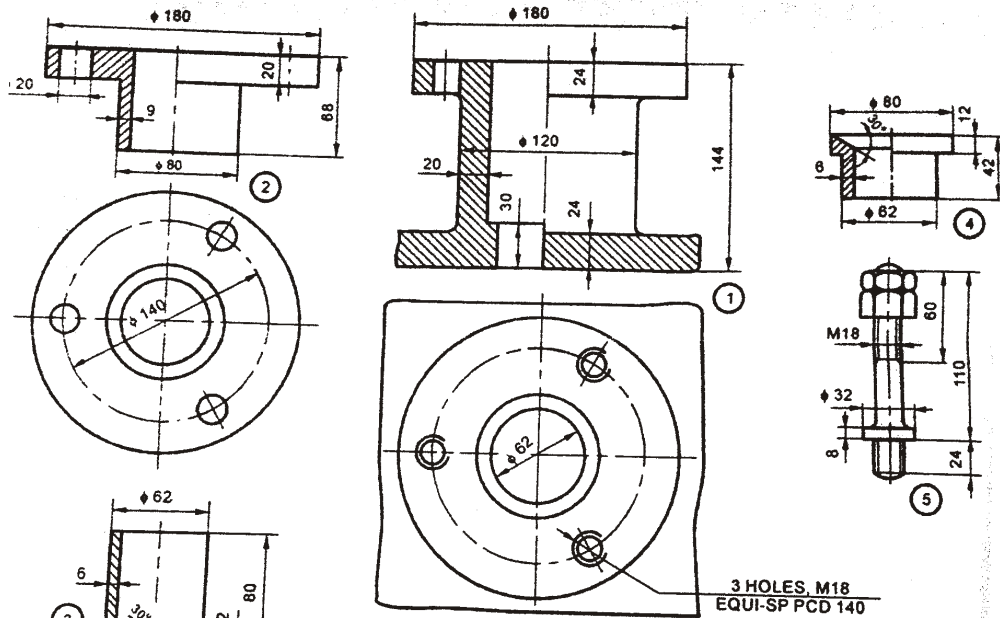
3. Draw the symbols of the following welded joints : 1×5=5
- (a) Single-bevel butt weld
- (b) Plug weld
- (c) Backing run
- (d) Convex double-V butt weld
- (e) Square butt weld
4. Draw the front view of single-riveted double-strap butt joint with 9 mm thickness. 5

PART—B

40

- Instructions :** (1) Answer *any one* question.
 (2) Each question carries **forty** marks.
 (3) All dimensions are in mm and assume missing dimensions, if any.

5. The details of stuffing box for a vertical steam engine are shown in figure (Page 3). Assemble the parts and draw the following views :
- (a) Half-sectional front view 20
- (b) Top view 15
- (c) Dimensioning 5



Parts list

No.	Name	Matl	Qty
1	Stuffing box	C I	1
2	Gland	C I	1
3	Gland bush	BRASS	1
4	Neck bush	BRASS	1
5	Stud with nuts	M S	3

6. The details of cotter joint with sleeve are shown in the figure below. Draw the following assembled views :

- (a) Half-sectional front view 20
- (b) Left-side view 15
- (c) Dimensioning 5

