



*

C16-M-RAC-306

6247

BOARD DIPLOMA EXAMINATION, (C-16)

JUNE/JULY—2022

DME - THIRD SEMESTER EXAMINATION

MACHINE DRAWING

Time : 3 hours]

[Total Marks : 60

PART—A

Instructions : (1) Answer all questions.

(2) Each question carries five marks.

(3) Answers should be neat and clear with all the necessary dimensions.

(4) All dimensions are in mm.

1. Draw the hexagonal headed bolt with a nut and a washer in position, taking nominal diameter is 20 mm and length 80 mm. $5 \times 1 = 5$

2. Draw the following rivet heads with suitable proportions : $2\frac{1}{2} + 2\frac{1}{2} = 5$

(a) Snap head

(b) Cone head

3. Draw the following weld symbols : $1 \times 5 = 5$

(a) Single butt weld

(b) Fillet weld

(c) Spot weld

(d) Seam weld

(e) Flat single V-butt weld

4. Draw the symbols for the following pipe fittings (single line) : $1 \times 5 = 5$

(a) Coupling

(b) Cap

(c) Tee

(d) 40° Elbow

(e) Check valve

/6247

1

[Contd...

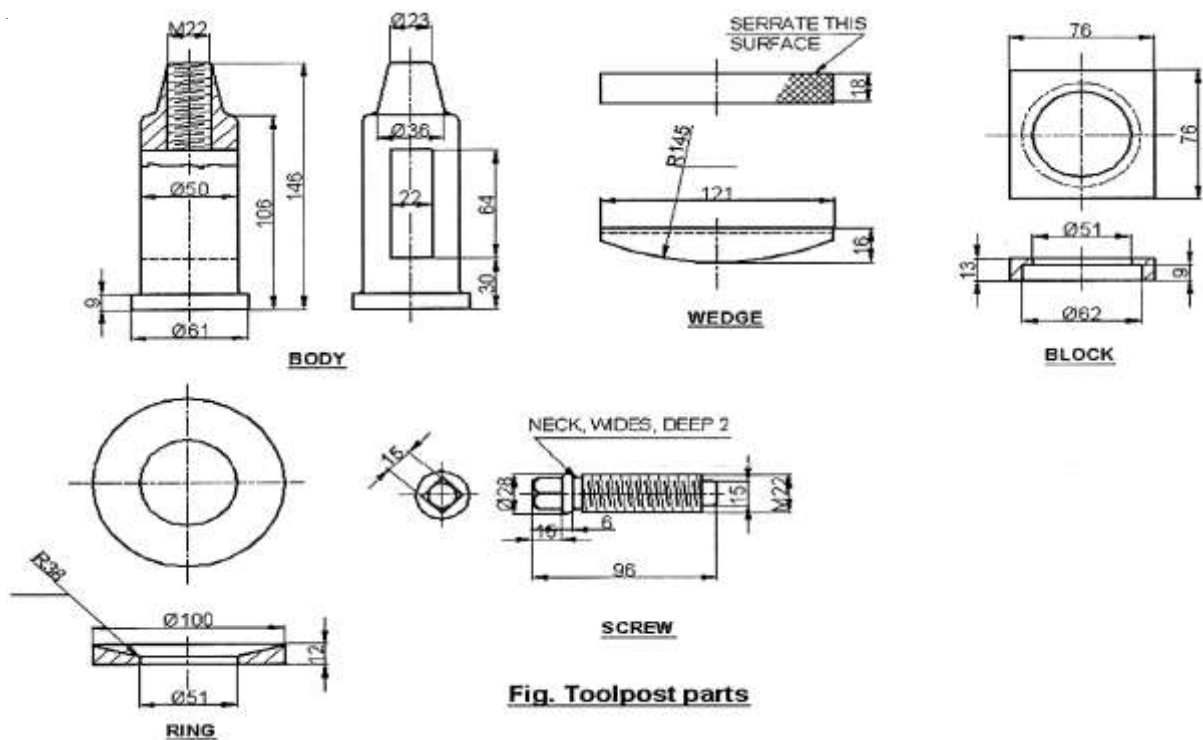
*

* PART—B

- Instructions :
- (1) Answer *any* one question.
 - (2) Each question carries forty marks.
 - (3) All dimensions are in mm.
 - (4) Choose suitable scale.
 - (5) Assume missing dimensions suitably.

5. Figure shows the details of tool post. Assemble all the parts and draw the following views of the assembly to full scale :

- | | |
|---------------------------|---------|
| (a) Front view | 18+5=23 |
| (b) Top view | 10+3=13 |
| (c) Prepare material list | 4 |



6. Figure shows*details of a Stuffing Box 65 mm diameter shaft. Assemble all the parts and draw the following views of the assembly to full scale :

- (a) Front view 18+5=23
- (b) Top view 10+3=13
- (c) Prepare material list 4

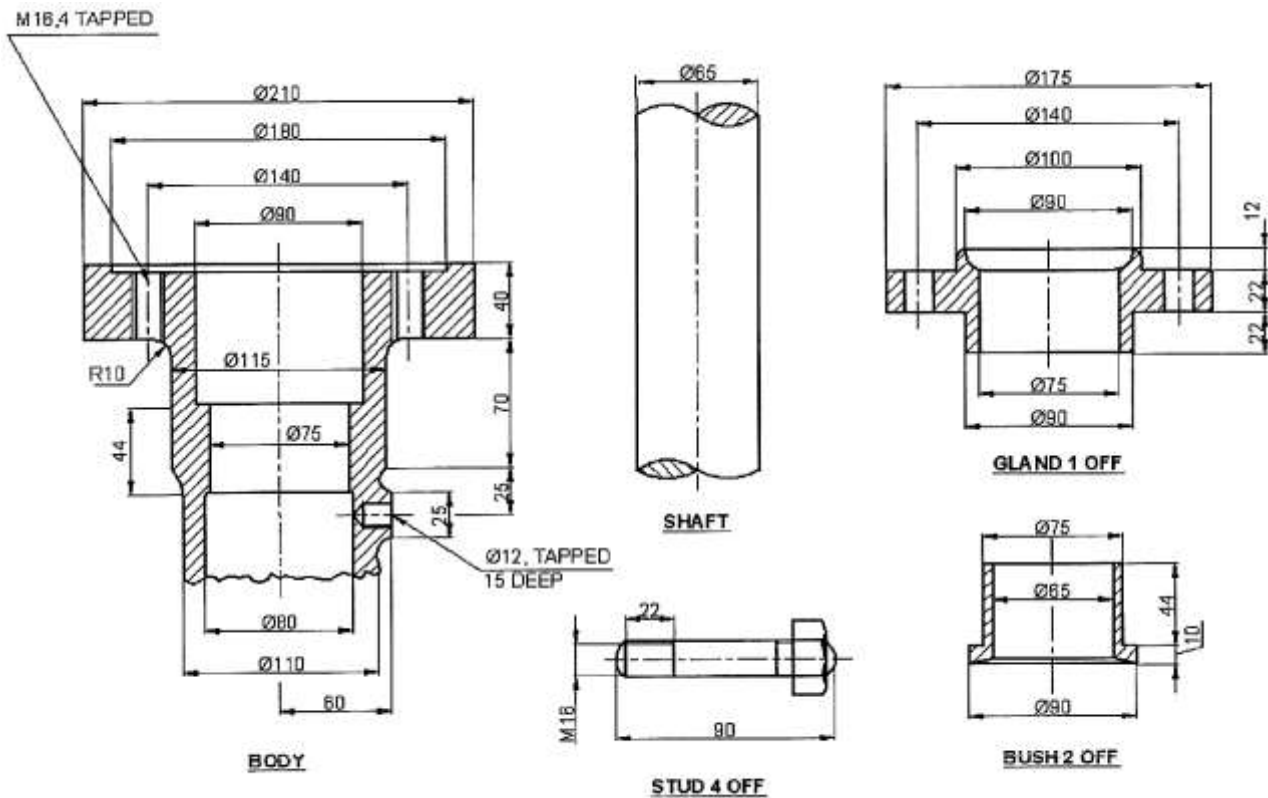


Fig. Stuffing Box parts

★★★