

\*

**4429****BOARD DIPLOMA EXAMINATION, (C-14)****MARCH/APRIL-2019****DCE - FOURTH SEMESTER EXAMINATION****BUILDING SERVICES DRAWING**

Time: 3 Hours

Max.Marks:60

**PART-A****5x4=20M**

**Instructions:** 1) Answer all questions. Each question carries Four marks.  
2) Draw the sketches not to scale.  
3) Assume suitable data wherever necessary.

- 1) Draw the conventional signs for the following items:  
a) European water closet    b) Indian type W.C    c) Wash basin
- 2) Draw the cross- section of a soak pit completely filled with aggregate and with partial lining.
- 3) Draw the electrical circuit diagram for one lamp controlled from two places using two way switches.
- \* 4) Draw the conventional signs for the following items:  
a) Fire alarm push.    b) Thermostat.  
c) Telephone instrument point internal. d) Electric unit heater.
- 5) Draw symbols for:  
a) Chiller    b) Pipe coil    c) Pump    d) Silencer

\*

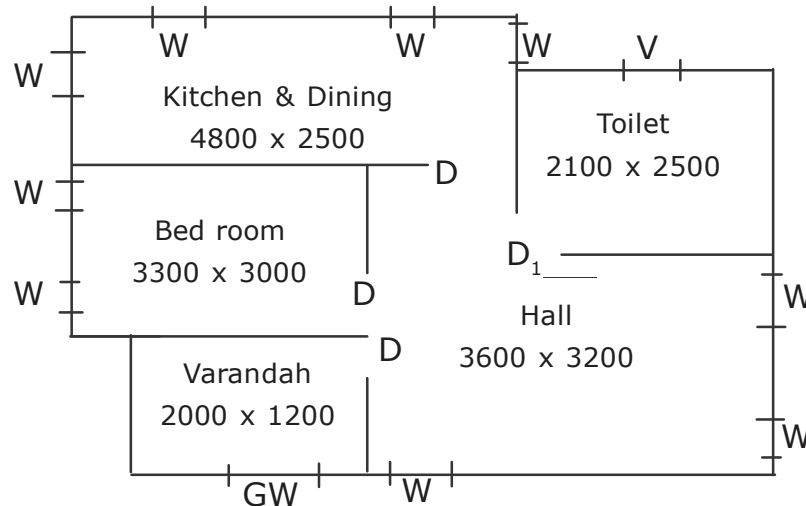
\*

## PART-B

**2x20=40M**

- Instructions:** 1) Answer all questions. Each question carries Twenty marks.  
2) Any missing data may be suitably assumed .  
3) The drawing must be to the scale.

- 6) Draw electrical wiring diagram in a single bed roomed residential building to a suitable scale for the line diagram as shown below.



All dimensions are in mm, all walls are 200mm thick in superstructure.

D = 1000mm x 2000mm, D1 = 750mm, x 1800mm,

W = 1000mm x 1200mm, V = 600mm x 450mm Electrical fittings.

Outside the verandah = 1 Fan; 1Lamp; 1 Tube Light 5Amp.

Socket outlet.

\*

In the hall = 1Fan; 1 Lamp; 1Tube light, Bell point; 2No. 5Amp. Socket outlets.

In Bed room = 1Fan; 1 Lamp; 1Tube light one 5Amp. Socket outlet.

In kitchen & Dining = 1 Fan; 2 Lamps; 1 Tube light, 1 Exhaust Fan;  
2 No. 5Amp. Socket outlets; one 15 Amp.  
Socket outlet

In Bath & Toilet = 1Lamp; 1Exhaust Fan one 15Amp. Socket outlet.

- 7) Draw the plan of ducting air conditioning system for a mini Theater/ auditorium.

\*

\* \* \*