



*

C14-M-407

4483

BOARD DIPLOMA EXAMINATION, (C-14)
MARCH/APRIL—2021
DME - FOURTH SEMESTER EXAMINATION
PRODUCTION DRAWING PRACTICE

Time : 3 hours]

[Total Marks : 60

PART—A

10×2=20

- Instructions :** (1) Answer *any two* questions.
(2) Each question carries **ten** marks.
(3) Draw neatly with proportionate dimensions.
(4) Use of production drawing tables is allowed.

1. The dimensions of a shaft and hole are given below :

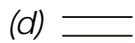
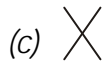
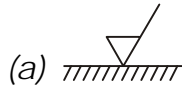
Hole $40^{+0.039}_{-0.000}$

Shaft $60^{+0.062}_{+0.041}$

Find (a) hole tolerance, (b) shaft tolerance, (c) minimum allowance, (d) maximum allowance and (e) type of fit for the assembly.

*

2. Write the meaning of the following surface roughness symbols :



3. Explain the following designations :

(a) Fe 410 Cu K

(b) Fe 470 W

(c) 30 C5 B0

4. List various methods of reproducing drawings.

PART—B

40×1=40

Instructions : (1) Answer *any one* question.

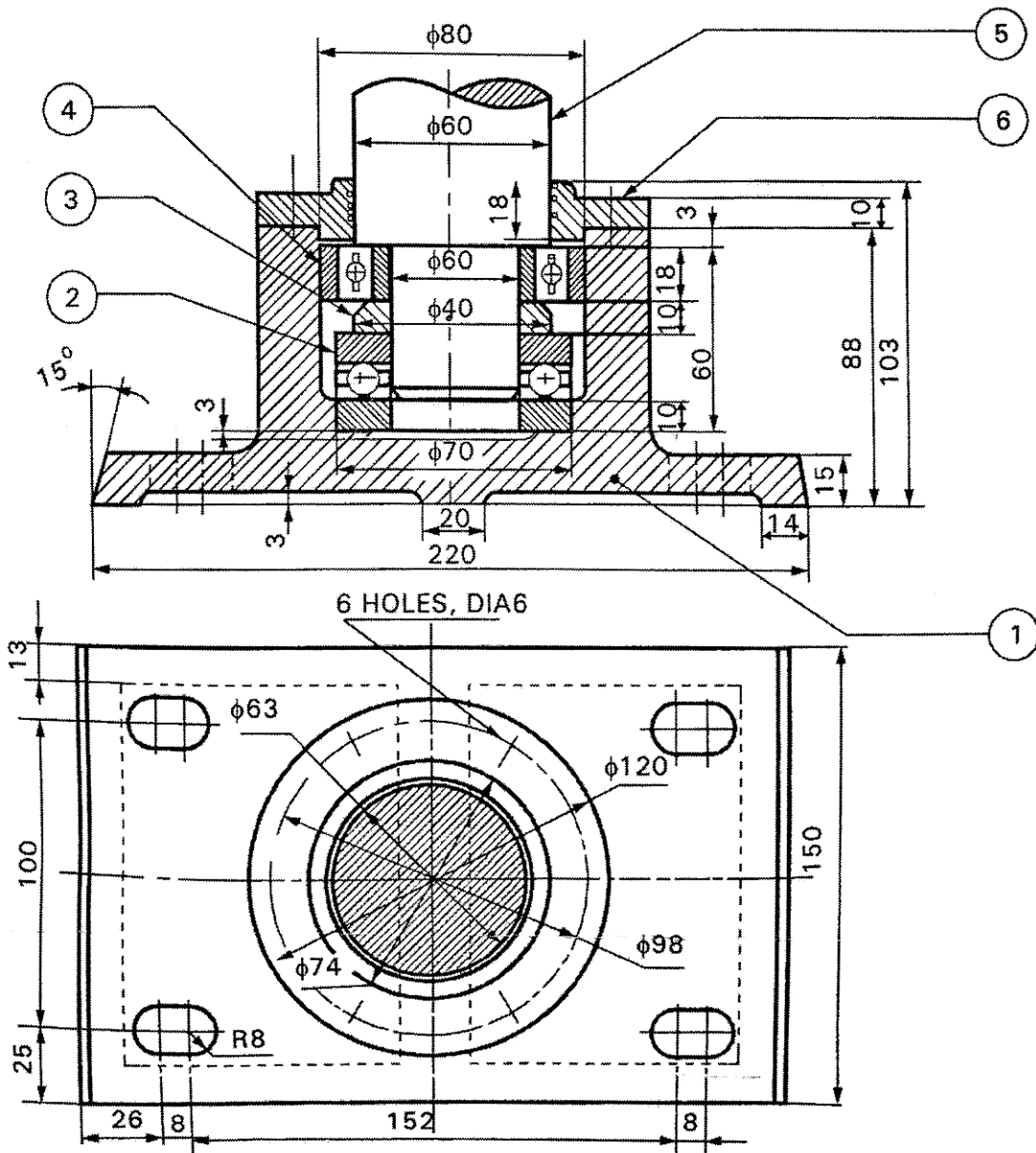
(2) Each question carries **forty** marks.

5. Study the given assembly drawing of foot step bearing and
- (a) draw the part drawings with suitable fits and tolerances
 - (b) indicate surface roughness values/symbols to the components
 - (c) prepare process sheet for the manufacturing of "Cover"
 - (d) prepare bill of materials

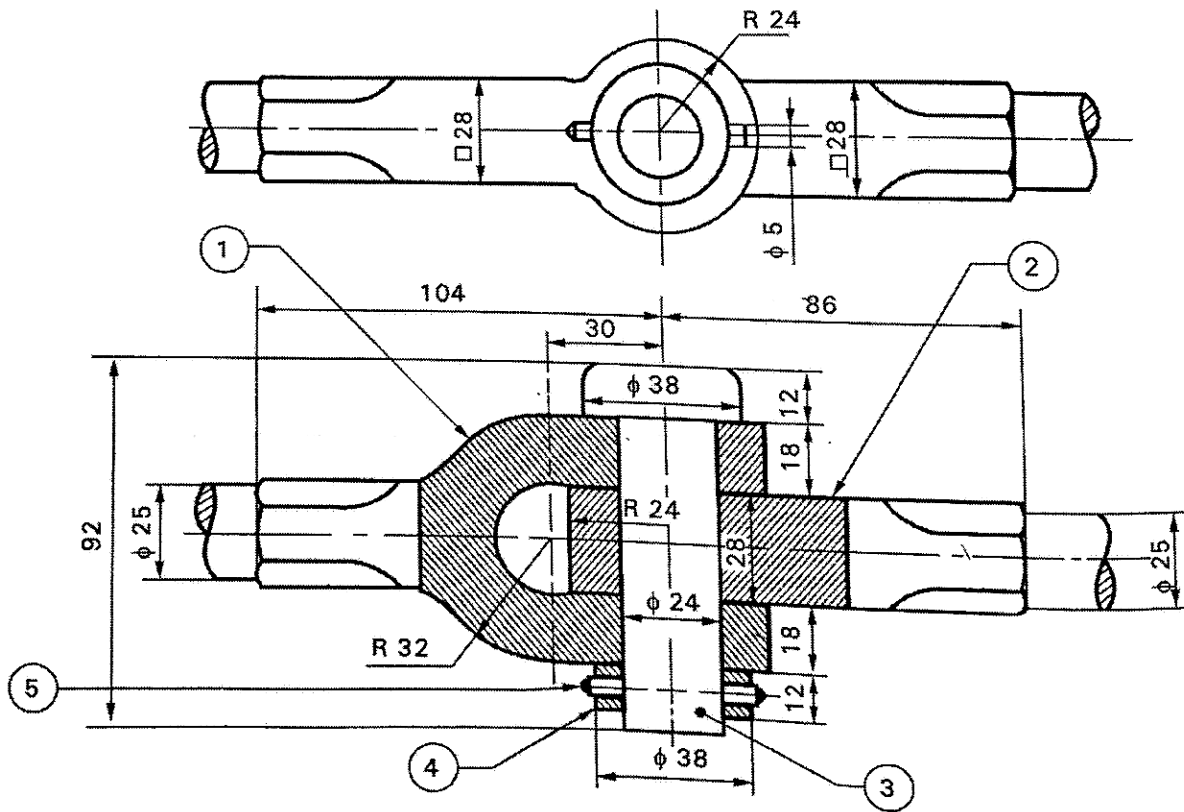
/4483

2

[Contd...



6. Study the given assembly drawing of knuckle joint and
- draw the part drawings with suitable fits and tolerances
 - indicate surface roughness values/symbols to the components
 - prepare process sheet for the manufacturing of "Pin"
 - prepare bill of materials



- Part-1 and 2 : Fork end and Eye end
 Part- 3 : Central Pin
 Part-4 : Collar
 Part- 5 : Cotter Pin
