

7262

BOARD DIPLOMA EXAMINATION, (C-20)

MAY—2023

DME - THIRD SEMESTER EXAMINATION

MACHINE DRAWING

Time : 3 Hours]

[Total Marks : 60

PART—A

5×4=20

- Instructions :** (1) Answer **all** questions.
(2) Each question carries **five** marks.
(3) All dimensions are to be in given in mm.

1. Draw the following screw thread profiles with standard proportions :
(a) ACME and 2½
(b) Knuckle 2½
2. Draw front view and top view of single riveted single strap butt joint for joining plates of thickness 16 mm. Take standard proportions. 2+3
3. Draw the following weld symbols : 1×5=5
(a) Fillet weld
(b) Seam weld
(c) Single J-butt weld
(d) Square butt weld
(e) Single bevel butt weld
4. Draw the following pipe fitting symbols : 1×5=5
(a) Lateral
(b) 90° Elbow
(c) Globe valve
(d) Cross
(e) Cap

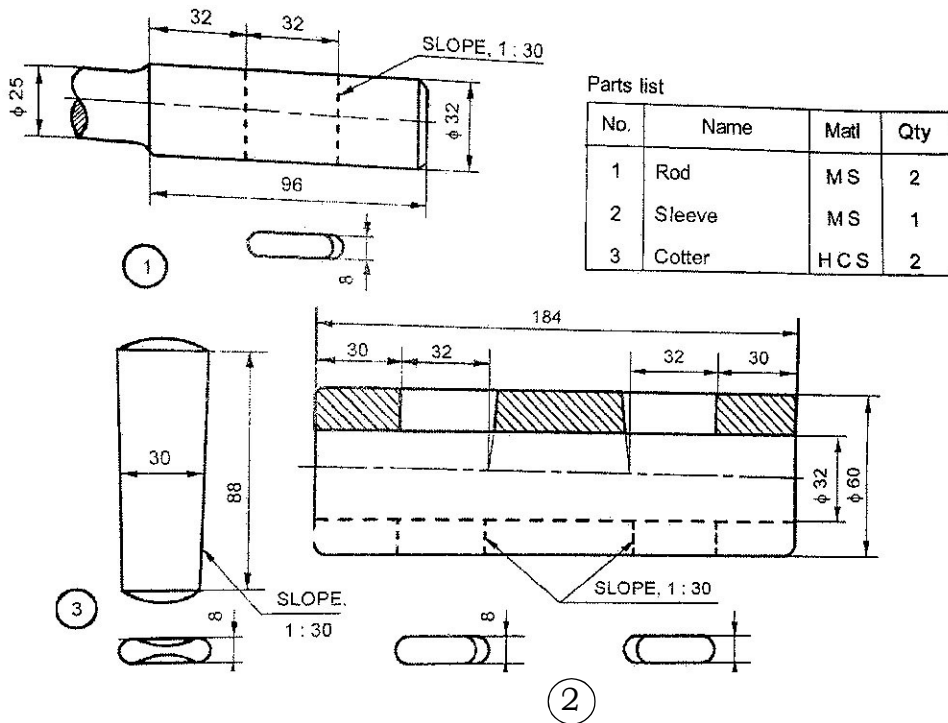
* **PART—B**

40×1=40

- Instructions :** (1) Answer *any one* questions.
 (2) Each question carries **forty** marks.
 (3) All dimensions are given in mm and choose suitable scale.
 (4) Assume missing dimensions suitably.

5. Assemble the parts of sleeve and cotter joint by using the part drawing given in the below figure and draw the following :

- (a) Half sectional front view with top half in section, 20
 (b) Top view and 15
 (c) Dimensioning. 5



(2)
COTTER JOINT WITH SLEEVE

6. Assemble the parts of Plummer block by using the part drawing given in the figure below and draw the following :

- (a) Half sectional front view with left half in section, 20
- (b) Top view and 15
- (c) Dimensioning. 5

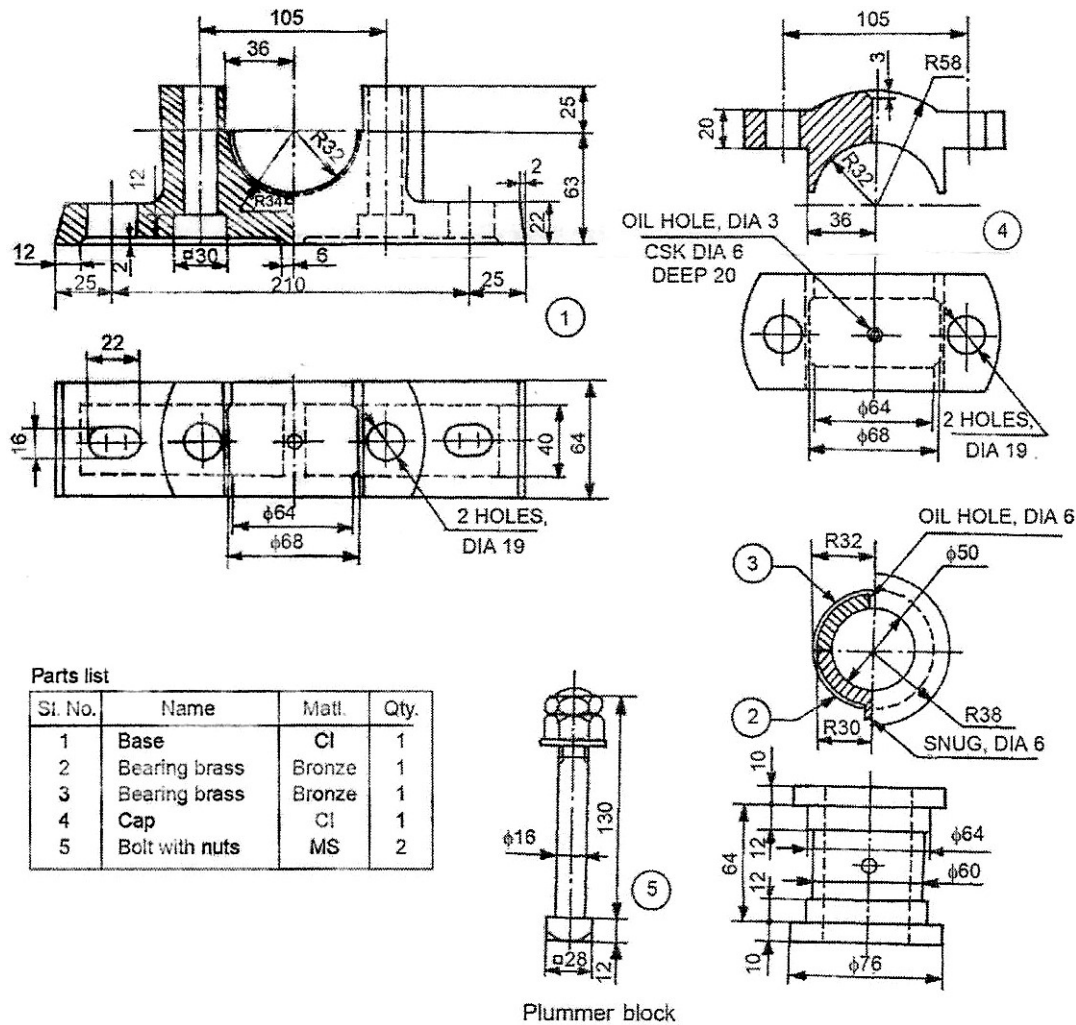


Fig. Plummer Block

★★★