

7262

BOARD DIPLOMA EXAMINATION, (C-20)
NOVEMBER/DECEMBER—2022
DME – THIRD SEMESTER EXAMINATION
MACHINE DRAWING

Time : 3 hours]

[Total Marks : 60

PART—A

- Instructions :** (1) Answer **all** questions.
(2) Each question carries **five** marks.
(3) All dimensions are given in mm.

1. Draw a M20 square headed bolt with standard proportions. 5
2. Draw GIB headed key with standard proportions. 5
3. Draw the following weld symbols : 1×5=5
 - (a) Single bevel butt weld
 - (b) Flat single V-butt weld
 - (c) Spot weld
 - (d) Backing weld
 - (e) Square butt weld
4. Draw the following pipe fitting symbols : 1×5=5
 - (a) Cap
 - (b) 90° Elbow turned down
 - (c) Check valve
 - (d) Tee
 - (e) Reducer

*

PART—B

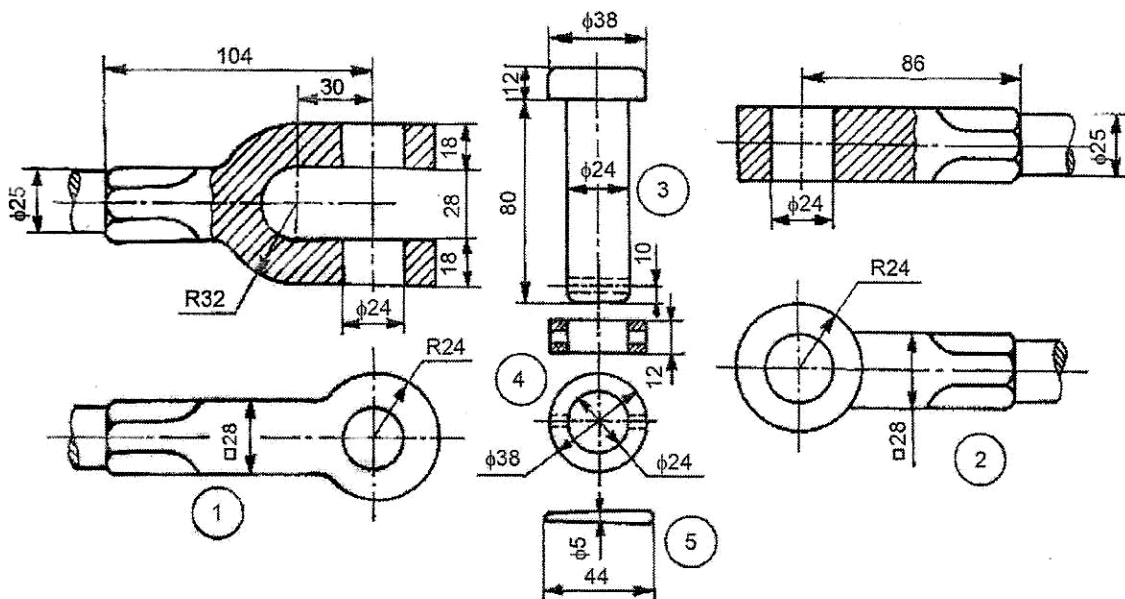
Instructions : (1) Answer *any one* question.

(2) Marks are indicated at the end of each question.

(3) Assume missing dimensions suitably.

5. Assemble the parts of knuckle joint by using the part drawing given in the figure below and draw the following :

- | | |
|-------------------------------|----|
| (a) Full sectional front view | 20 |
| (b) Top view and | 15 |
| (c) Dimensioning | 5 |



Parts list

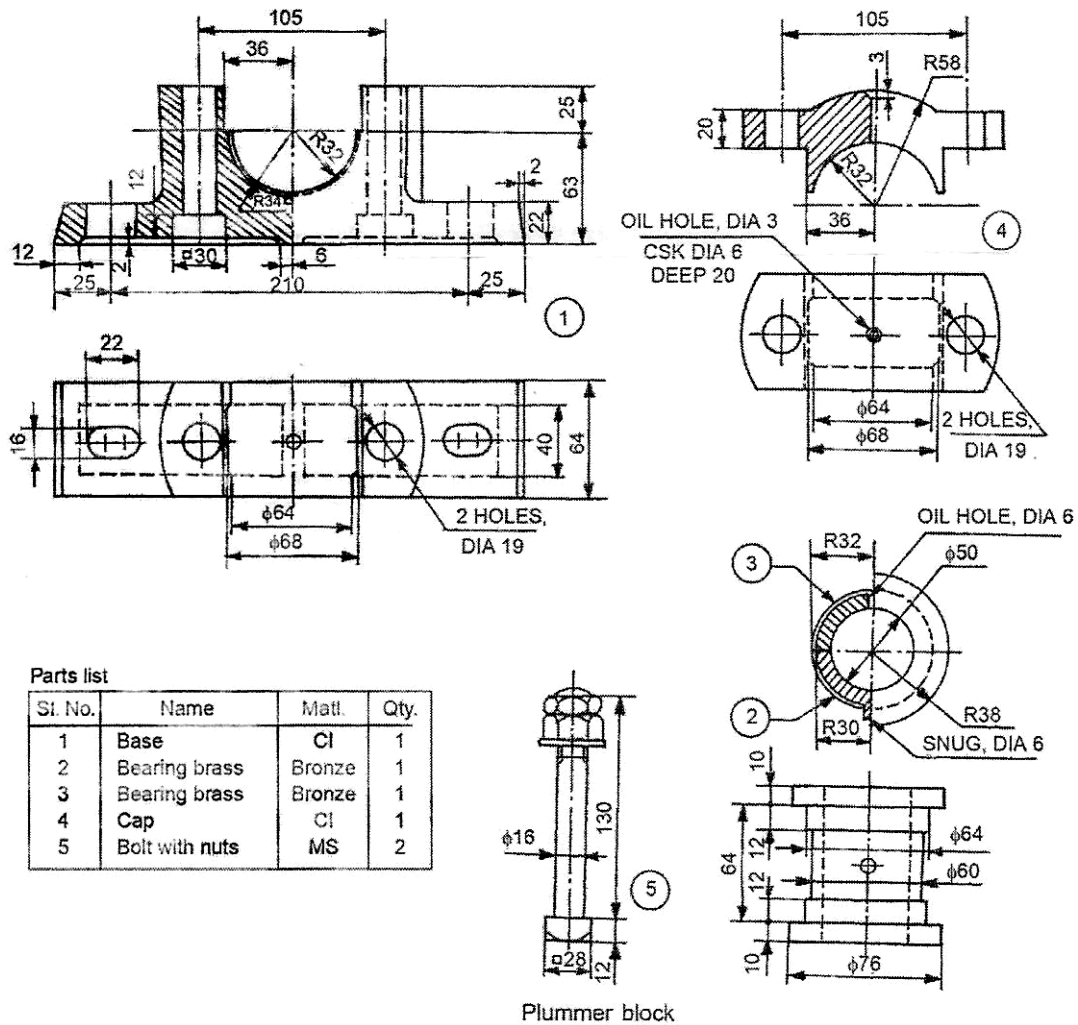
| Sl. No. | Name | Mati. | Qty. |
|---------|-----------|--------------|------|
| 1 | Fork end | Forged steel | 1 |
| 2 | Eye end | Forged steel | 1 |
| 3 | Pin | Mild steel | 1 |
| 4 | Collar | Mild steel | 1 |
| 5 | Taper pin | Mild steel | 1 |

Knuckle joint

(OR)

6. Assemble the parts of Plummer block by using the part drawing given in the figure below and draw the following :

- (a) Half sectional front view with left half in section 20
- (b) Top view and 15
- (c) Dimensioning 5



★ ★ ★